

## Hardware, Cable Manager, 19" Duct

### Features and benefits

- Removable front cover
- Finger guide channels at the top and bottom of the cable manager
- Openings for routing patch cables from the rear side
- Secures and retains patch cables
- Maintains proper bend radius
- Cable transition from horizontal to vertical



### Description

The 19" 1U/2U duct cable managers are constructed using steel and finished in powder coated black color. The duct cable manager comes with a removable front cover and a finger guide channel on the top & bottom of the channel and an opening at the rear for pass through. These finger guide channels allow the patch cords to enter/exit at any point and provide a pleasing look to the cabinet.

Cable management products deliver excellent cable management support when used in conjunction with other Opterna 19" products. The cable managers are designed for use in 19" rack environments for managing patch cords that are connected between patch panels and the network switch.

It is recommended that one cable manager is mounted between every patch panels or a network switch. All cable managers are design to meet EIA-310-E standard and hence all compatible with any 19" racks or cabinets.

### Applications

- Standard 19" rack compatible
- Data Centers & MDF/IDF racks and cabinets
- Used between patch panel and network switch in racks and cabinets

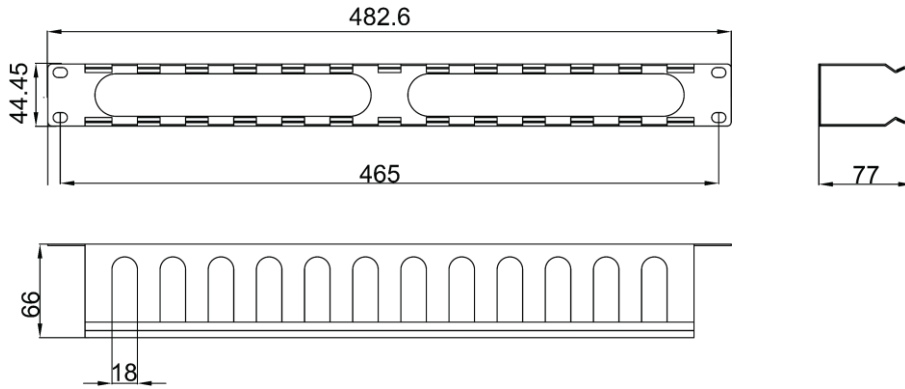
### Standards

- IEC 60297-3
- EIA-310-E
- DIN 41494-1, 7

### Technical data

Mechanical data	Value
Dimensions (W x D x H)	See technical drawing
Material	Housing – Steel 1.5mm
Finish	RAL 9017, Black, fine texture finish RAL 7032, Grey, fine texture finish

Technical drawing



Ordering information

Description	Part code
19" Duct type cable manager with cover, 1U	SCS-CMD-1U-BK
19" Duct type cable manager with cover, 2U	SCS-CMD-2U-BK

Also available in Grey (GY), replace BK with GY.