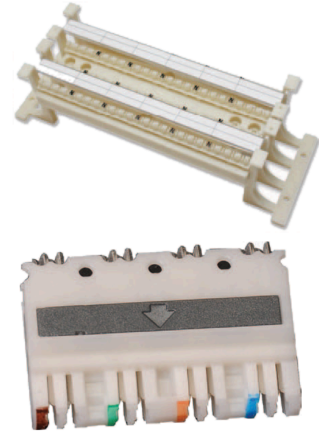


Copper Structured Cabling, Cross Connect, Cat6

Features and benefits

- Designed for areas of limited space
- Available with fixing legs
- Label strips for easy identification
- Cables can be routed from the left or right
- Available in wall mount versions of 48 and 96 pairs with legs
- Rack mount version for 96 or 192 pairs
- 19" 110 series integrated with cable managers



Description

Opterna Category 6 110-Type blocks are designed to support voice and high-speed data applications. The 110-series wiring block conforms to ANSI/TIA/EIA-568-C.2, ISO/IEC 11801:2011 edition 2.2 and CENELEC EN50173:2011 for Category 6 Class E applications.

The cross connect system is available in 19" rack mounted and wall mounted versions. For wall mount applications, the 110 cross connect with legs can be fixed directly on the wall or onto backboards. All 19" 110 rack solutions are by default without legs. The 110 block without legs can be also used for the basic and extension cross connect racks.

The 110 cross connect system can be used in building entrance facilities, telecommunications closets, and equipment rooms to provide fixed cross connections for voice and data applications.

Wall mount cross connects system is available in 48 & 96 pair versions and 19" cross connect is available in 96 and 192 pair versions. The 4-pair connecting block has to be used for category 6 horizontal cabling terminations.

Applications

- Consolidation points for voice and data
- Supports high speed data applications when used with Category 6 cables
- Wall-mounted or rack-mounted

Standards

- ANSI/TIA-568-C.2
- ISO/IEC 11801:2011 edition 2.2
- CENELEC EN 50173-1:2011
- UL94V-0

Technical data

Mechanical data	Value
Dimensions (W x D x H)	See technical drawing
Material Wiring Block	19" frame – 1.5mm steel powder coated Wiring base – PC UL94V-0
Material Connecting Block	PC UL94V-0 Phosphor bronze plated with 100 micro-inch SN, plated with 100% Tin

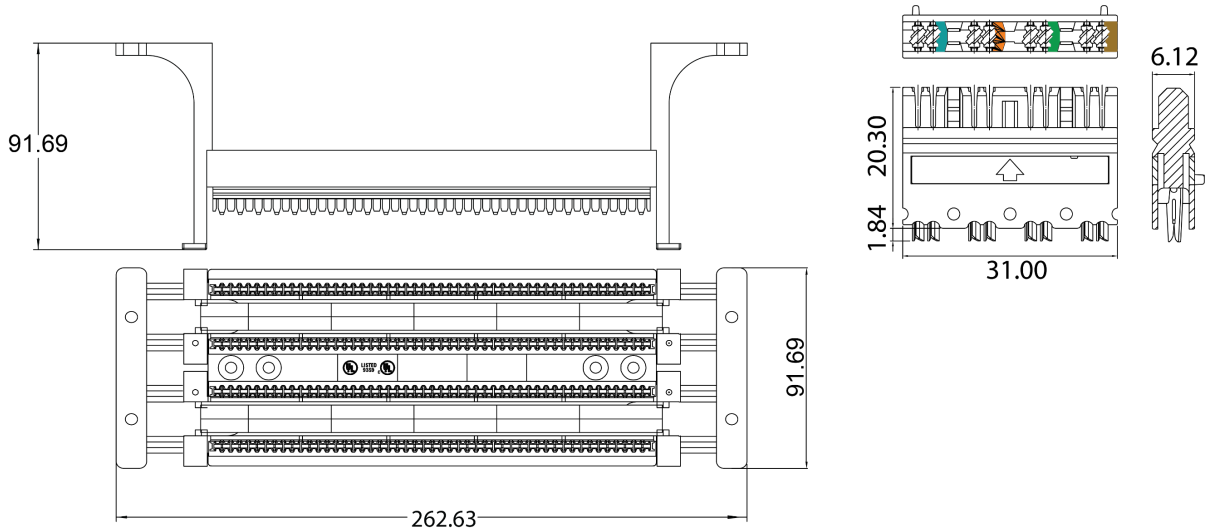
Electrical Characteristics

Insulation Resistance	10 MegaOhms min
Dielectric Withstanding Voltage	1000 volts, RMS, 60HZ, 1 min
Contact resistance	20 milliohms min
Current Rating	1.5 Amps at 20°C

Environmental Conditions

Storage	-40°C to +70°C
Operation	-10°C to +60°C
Relative Humidity (Operational)	Maximum non-condensing 93%

Technical drawing



Ordering information

Description	Part code
110 Wiring block series without legs	
48 Pair 110 wiring block without legs	SCS-WWB-C6-48P
96 Pair 110 wiring block without legs	SCS-WWB-C6-96P
110 Wiring block series with legs	
48 Pair 110 wiring block with legs Cat6	SCS-WWB-C6-48P-L

100 Pair 110 wiring block with legs Cat6	SCS-WWB-C6-96P-L
110 Cable manager with legs	SCS-CM-110-L
110 19" Rack mount wiring block series	
96 Pair 110 type, 19" rack mount wiring block Cat 6	SCS-RWB-C6-96P-2U
192 Pair 110 type, 19" rack mount wiring block Cat 6	SCS-RWB-C6-192P-3U
110 Connecting block	
110 type 4-pair connecting block, category 6	SCS-WBC-C6-4P