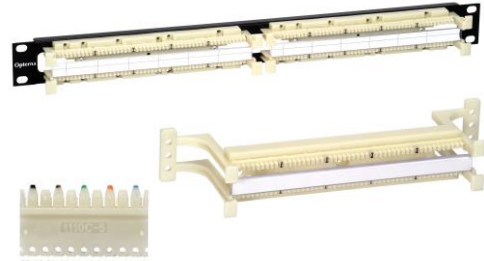


## Copper Structured Cabling, Cross Connect, Cat3/5e

### Features and benefits

- Designed for areas of limited space
- Available with fixing legs
- Label strips for easy identification
- Cables can be routed from the left or right
- Available in wall mount versions of 50 and 100 pairs
- Rack mount version for 100 or 200 pairs
- Wall mount and 19" cable managers  
Available in Cat3 and Cat5e



### Description

Opterna Category 3 and 5e 110-Type blocks are designed to support voice and high-speed data applications. The 110-series wiring block conforms to ANSI/TIA-568-C.2, ISO/IEC 11801:2011 edition 2.2 and CENELEC EN50173:2011 for Category 3/5e Class C/D applications.

The cross connect system is available in 19" rack mounted and wall mounted versions. For wall mount applications, the 110 cross connect with legs can be fixed directly on the wall or onto backboards. All 19" 110 rack solutions are by default without legs. The 110 block without legs can be also used for the basic and extension cross connect racks.

The 110 cross connect system can be used in building entrance facilities, telecommunications closets, and equipment rooms to provide fixed cross connections for voice and data applications.

Wall mount cross connects system is available in 50, 100 versions and 19" cross connect is available in 100 and 200 pair versions. The 5-pair connecting block must be used for category 3 backbone cabling terminations and the 4 pair for horizontal category 5e cabling.

### Applications

- Building entry facilities
- Telecoms closets
- Equipment rooms
- Wall-mounted or rack-mounted
- Voice and data communications

### Standards

- ANSI/TIA-568-C.2
- ISO/IEC 11801-1:2017
- CENELEC EN 50173-1:2011
- UL94V-0

### Technical data

Mechanical data	Value
Dimensions (W x D x H)	See technical drawing

Material Wiring Block	19" frame – 1.5mm steel powder coated Wiring base – PC UL94V-0
Material Connecting Block	PC UL94V-0 Phosphor bronze plated with 100 micro-inch SN, plated with 100% Tin

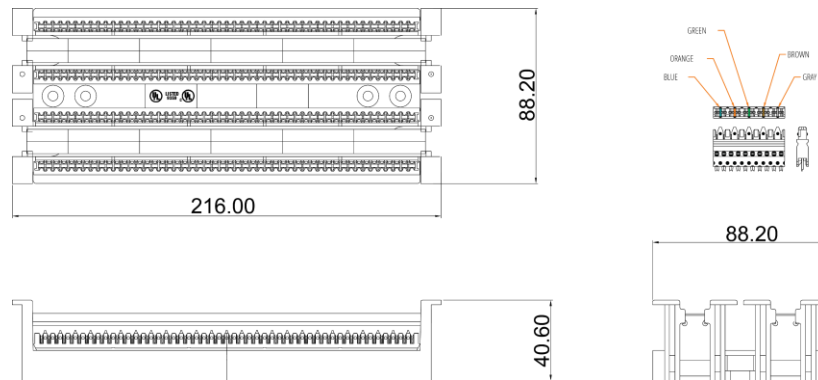
**Electrical Characteristics**

Insulation Resistance	10 Mega Ohms min
Dielectric Withstanding Voltage	1000 volts, RMS, 60HZ, 1 min
Contact Resistance	20 milliohms min
Current Rating	1.5 Amps at 20°C

**Environmental Conditions**

Storage	-40°C to +70°C
Operation	-10°C to +60°C
Relative Humidity (Operational)	Maximum non-condensing 93%

**Technical drawing**



**Ordering information**

Description	Part code
<b>110 Wiring block series without legs</b>	
50 Pair 110 wiring block without legs	SCS-WWB-50P
100 Pair 110 wiring block without legs	SCS-WWB-100P
110 Cable manager without legs	SCS-CM-110-NL
<b>110 Wiring block series with legs</b>	
50 Pair 110 wiring block with legs	SCS-WWB-50P-L
100 Pair 110 wiring block with legs	SCS-WWB-100P-L
110 Cable manager with legs	SCS-CM-110-L
<b>110 19" Rack mount wiring block series</b>	
100 Pair 110 type, 19" rack mount wiring block	SCS-RWB-100P
200 Pair 110 type, 19" rack mount wiring block	SCS-RWB-200P
19" 1U 110 Cable manager	SCS-CM-110-R
<b>110 Connecting block</b>	
110 type 5-pair connecting block, category 3	SCS-WBC-C3-5P
110 type 4-pair connecting block, category 5e	SCS-WBC-C5e-4P